

A large, multi-story university building with a prominent white dome and a clock tower. The building has many windows and a central entrance with a white portico. It is surrounded by green lawns and large trees, some with autumn-colored leaves. A yellow banner with blue text is overlaid on the middle of the image.

HERE, FROM DAY ONE, YOU WILL BE AN INSIDER



Widener University

BEST LIFE



YOU'LL STUDY WITH PEOPLE

whose leadership, thinking, and research are shaping the fields you're preparing to enter.



YOU'LL BE THE FIRST PRIORITY

of devoted professors whose mentorship and feedback will deepen your learning and propel your success.



**YOU'LL BUILD
YOUR BEST LIFE,**
breaking new ground
with incredible friends,
doing what you love,
preparing for a future
you're helping to invent.




**WE'LL GET TO
REALLY KNOW YOU.**

Up close and personal.
To help you build an
education that springs
from your talents and
dreams. *[Yes, this takes
time, but it's worth it.]*



WHEN YOU GRADUATE,
you won't be just
starting your career.
You'll be continuing
the work you've been
doing all along.



LISTEN

WE START BY PAYING ATTENTION to who you are and how you learn. To what you value and where you're headed. What follows is teaching that matches your style. A course of study that grows from your ambitions. And opportunities that lead to your dreams.



PRIORITY.

THAT SOUND YOU HEAR IS FEEDBACK. Your Widener professors—along with peer mentors, academic advisors, a personal librarian, and a host of others—make up your Personal Student Success Team. They work together to provide close and constant feedback on your work, connect you with difference-making opportunities, and guide your academic, professional, and personal development through years of unprecedented personal attention.



**SCHOLARS, ENGINEERS, CLINICIANS,
ATTORNEYS, AND ENTREPRENEURS,
WIDENER PROFESSORS ARE DEEPLY
CONNECTED TO THEIR INDUSTRIES,**

infusing their teaching with the
latest trends, technologies, and
research—preparing you to hit the
workplace ready and a step ahead.

LEADING

EDGE.

**HERE FOR YOU: POWERHOUSE PROGRAMS
THAT MIRROR THE PROFESSIONS YOU'RE
PREPARING TO ENTER.**

Hands-on professional development opportunities. Industry-specific leadership insights. You'll gain experiences and skills that help you supercharge your résumé, ace the interview, and land your dream job.

**Our focus on
program-specific
leadership development**
means you'll gain qualities that
will set you apart from others
in your field—leading
to greater responsibility
and pay as you advance
in your career.





**COME
JOIN THE
WIDENER
PRIDE.**

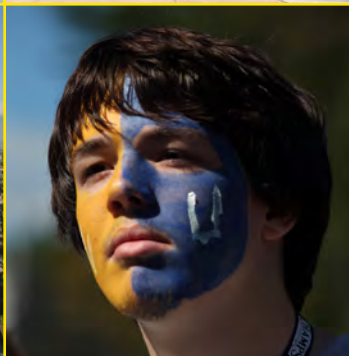
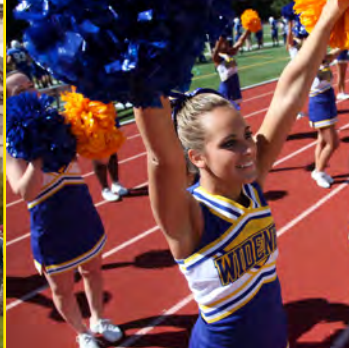


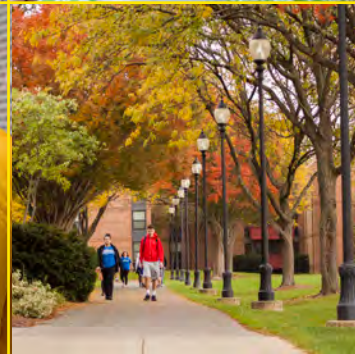
MEET YOUR
**SECOND
FAMILY.**

UNLOCK YOUR
**FULL
POTENTIAL.**

BUILD YOUR
**BRIGHTEST
FUTURE.**









YOUR WIDER WORLD.

GET AWAY FOR THE WEEKEND.

We're just a short drive to the beaches of New Jersey and Delaware or the ski slopes and deep trails of the Pocono Mountains.

NEW YORK CITY, NY 111 mi.

95

HARRISBURG, PA 109 mi.

ROCK THE SUBURBS, from the King of Prussia Mall [the largest on the East Coast] to on-trend boutiques in nearby Media.

WILMINGTON, DE 12 mi.

PHILADELPHIA, PA 12 mi.

**WIDENER
UNIVERSITY**

CHESTER, PA

BALTIMORE, MD 88 mi.

WASHINGTON, D.C. 120 mi.

VISIT GREAT EAST COAST CITIES

You can easily access Wilmington, Baltimore, Harrisburg, Washington, D.C., and New York City by car or train.

ENJOY THE GREAT OUTDOORS,

including Fairmount Park [the country's largest urban park], wildlife refuges, trail systems, and Widener's own Taylor Arboretum.

EXPLORE A WORLD-CLASS CULTURE

from leading museums to edgy contemporary art to a globally respected music scene and tons of history. [America started right here!]

ROOT FOR THE HOME TEAM

The Eagles, Phillies, Flyers, Sixers, and Union all play just minutes from campus.

PURSUE INTERNSHIPS OR CO-OPS

with established companies or scrappy startups, in bedrock industries or emerging frontiers.

LIVE AMONG FRIENDS.

77%+

OF FIRST-YEAR UNDERGRADUATES

live on campus. Choose a traditional, modern residence hall or opt for a Living Learning Community, where you'll live with students who share a major or interest.

HEALTH AND WELLNESS:

We offer an extensive roster of club and intramural sports, as well as the Pride Recreation Center—a state-of-the-art, 20,000-square-foot wellness facility.

VARSITY ATHLETICS: We're home to 24 NCAA Division III men's and women's teams, which compete in the Middle Atlantic Conference.

WIDENERPRIDE.COM

SOCIAL AND SERVICE LIFE: Join the nearly 25% of Widener students who are members of one of our 11 nationally affiliated Greek chapters.

MUSIC AND PERFORMING ARTS:

Study or get involved with fine art, dance, media, music, and theater; in addition, Widener offers two student-edited literary journals.

CLUBS AND ORGANIZATIONS:

Choose among more than 80 outlets for exploring and celebrating culture, outreach, and academic interests.

Examples include:

- Black Student Union
- Marching Band and Color Guard
- Outdoor Adventure Club
- Robotics Club
- Sexuality and Gender Alliance
- Student Government Association
- The Blue Route [literary journal]
- The Fresh Baked Theatre Company
- WUCast Radio

FORWARD. THINKING.

WE ARE NOT HELD BACK BY CONVENTIONAL EDUCATIONAL MODELS.

Build a degree path calibrated to anticipate the needs of a shifting market. We can help unlock your career.

MAJORS

Anthropology

Biochemistry

Biology

Business

- Accounting

Concentrations:

Taxation, Certified Management Accountant [CMA], Forensic Accounting

- Business Analytics

- Economics

Concentration:

Financial Planning

- Finance

Concentrations:

Traditional Finance, Financial Planning

- International Business

- Management

Concentrations:

General Management, Human Resources, Supply Chain Management

- Marketing

Concentration:

Digital Marketing

- Sport & Event Management

**Chemistry
Communication Studies**

- Advertising & Public Relations

- Broadcasting/ Multimedia Journalism

- Film Studies

- Graphic Design

- Health Care Communication

**Computer Science/Computer
Information Systems**

Creative Writing

Criminal Justice

Digital Media Informatics

- Audio-Visual

- Digital Writing

- Gaming & Artificial Intelligence

- Graphics, Mobile, & Web Development

Education

- Elementary Education &

- Special Education Certification

- Secondary Education [7-12]

Engineering

- Biomedical Engineering

- Chemical Engineering

- Civil Engineering

- Electrical Engineering

- Mechanical Engineering

- Robotics Engineering

English

- Digital Humanities

Environmental Health

& Sustainability Management

Environmental Science

& Sustainability

French

Gender, Women,
& Sexuality Studies

Green Chemistry

History

International Relations

Mathematics

Nursing

Physics

Political Science

Psychology

Social Work

Sociology

- Applied Sociology

- Civic Engagement
& Social Change

- Health & Society

- Social Research

Spanish

Visual & Performing Arts

- Arts Administration

- Dance

- Music

- Visual Art

Accelerated Master's Options

4+1 Engineering Master's

4+1 Business Master's

4+2 Nursing Master's

4+1 Criminal Justice Master's

4+1 Public Administration
Master's

4+1 Social Work Master's

Pathway Programs

Pre-Dentistry

Pre-Law

Pre-Medicine

Pre-Occupational Therapy

Pre-Pharmacy

Pre-Physical Therapy

Pre-Veterinary

Undecided?

Enter under
Exploratory Studies

For a complete list of majors
and concentrations, visit

WIDENER.EDU/MAJORS

ACCELERATED PROGRAMS: Save time, money, and hassle through our 4+1 accelerated bachelor's/master's programs. Every undergraduate major rolls into a master's degree—elevating your marketability and earning power.



CO-OP TO CAREERS: Complete a 12-month co-op in your field of professional focus and still graduate in four years—as opposed to peer institutions that require a fifth year.

BY THE NUMBERS

2,700+ undergraduates, representing **49 states** with **29% of the student body** consisting of U.S. students of color and international citizens.

25 average class size

12 to 1 undergraduate student-to-faculty ratio

91% of our faculty members hold a doctorate or the highest degree in their fields.

\$8–\$10 million managed by Widener every year in grant funding for research and community programming.

LIFELONG VALUE

**YOU'LL GRADUATE WITH THE SKILLS AND KNOW-HOW
EMPLOYERS DESPERATELY NEED—AND GENEROUSLY REWARD.**

WIDENER'S 2020 GRADUATES

earned a median starting salary of \$62,500—which is 11% higher than the national average.

66%

OF WIDENER STUDENTS complete an internship, a practicum, or similar hands-on experience. That's 14% higher than the national average.

The mid-career salaries of Widener alumni are in the top

18%

NATIONWIDE.

ADMISSION

FIRST-YEAR STUDENTS

Applying is free and simple. Admission is rolling. Essays and letters of recommendation are not required, and neither are standardized test scores. You can apply on the Widener website or by adding us on the Common Application. An early action option is available.

TRANSFER STUDENTS

We aim to keep the transfer process simple and hold articulation agreements with many Philadelphia-area colleges.

INTERNATIONAL STUDENTS

Our community includes 300 international students from 43 countries. Our caring staff are here to help you adjust to life and learning in the United States.

APPLY OR LEARN MORE:
[WIDENER.EDU/APPLY](https://widener.edu/apply)

AFFORDABILITY

If Widener is for you, there's a place for you at Widener. Our individualized and immersive education requires sustained and significant investment. Widener's full tuition reflects what it takes to put our students on the inside track to success.

If Widener is the right fit for your learning style and future plans, let's work together to make it possible. 97% of first-year students receive financial aid from Widener, bringing this exceptional education within reach for families who might not otherwise be able to afford it.

Get started on your financial aid package by filling out the Free Application for Federal Student Aid (FAFSA) at fafsa.gov.

LEARN MORE:
[WIDENER.EDU/
UNDERGRADUATESCHOLARSHIPS](https://widener.edu/undergraduatescholarships)



VISITING

To visit Widener is, more often than not, to fall in love with the place. To fit your timeline and schedule, we offer a variety of ways to get to know us, in person or virtually.

[WIDENER.EDU/VISITUS](https://widener.edu/visitus)



Widener University

ONE UNIVERSITY PLACE, CHESTER PA, 19013

1-888-WIDENER (943-3637)

WIDENER.EDU